

---

**PUBLIC SCHOOLS of  
BROOKLINE**

Advisory Panel 4:  
Public Health, Safety, & Logistics

Meeting Slides

March 4, 2022

# Community Benchmarks - Status

<b>Benchmark</b> (each measured over prior 14 days)	Status 1/15/22	Status 1/29/22	Status 2/12/22	Status 2/26/22
<b>Avg. daily new case count in Brookline = &lt;10 per 100k people</b>	151.7	78.5	28.6	<b>16.9</b>
<b>Avg. daily new case count in Mass. = &lt;10 per 100k people</b>	278.9	110.5	36.5	<b>16.1</b>
<b>Avg. test positivity rate in Brookline = &lt;5.0%</b>	10.52%	5.08%	2.19%	<b>1.41%</b>
<b>Avg. test positivity rate in Massachusetts = &lt;5.0%</b>	20.61%	10.06%	4.22%	<b>2.32%</b>

*Panel 4 selected these four community transmission benchmarks in August 2020 as triggers for focused evaluation and discussion of whether changes in operations are warranted, not as definitive indicators of in-school risk or thresholds for automatic action. Research and PSB-specific data since that time have convincingly shown that in-school transmission risk can be kept very low even at high levels of community case incidence.*

# MA DPH Color Scale



Incidence Rate Color Table  
 Massachusetts Department of Public Health COVID-19 Dashboard - Thursday, November 12, 2020  
**Average Daily Incidence Rate per 100,000 Color Calculations**

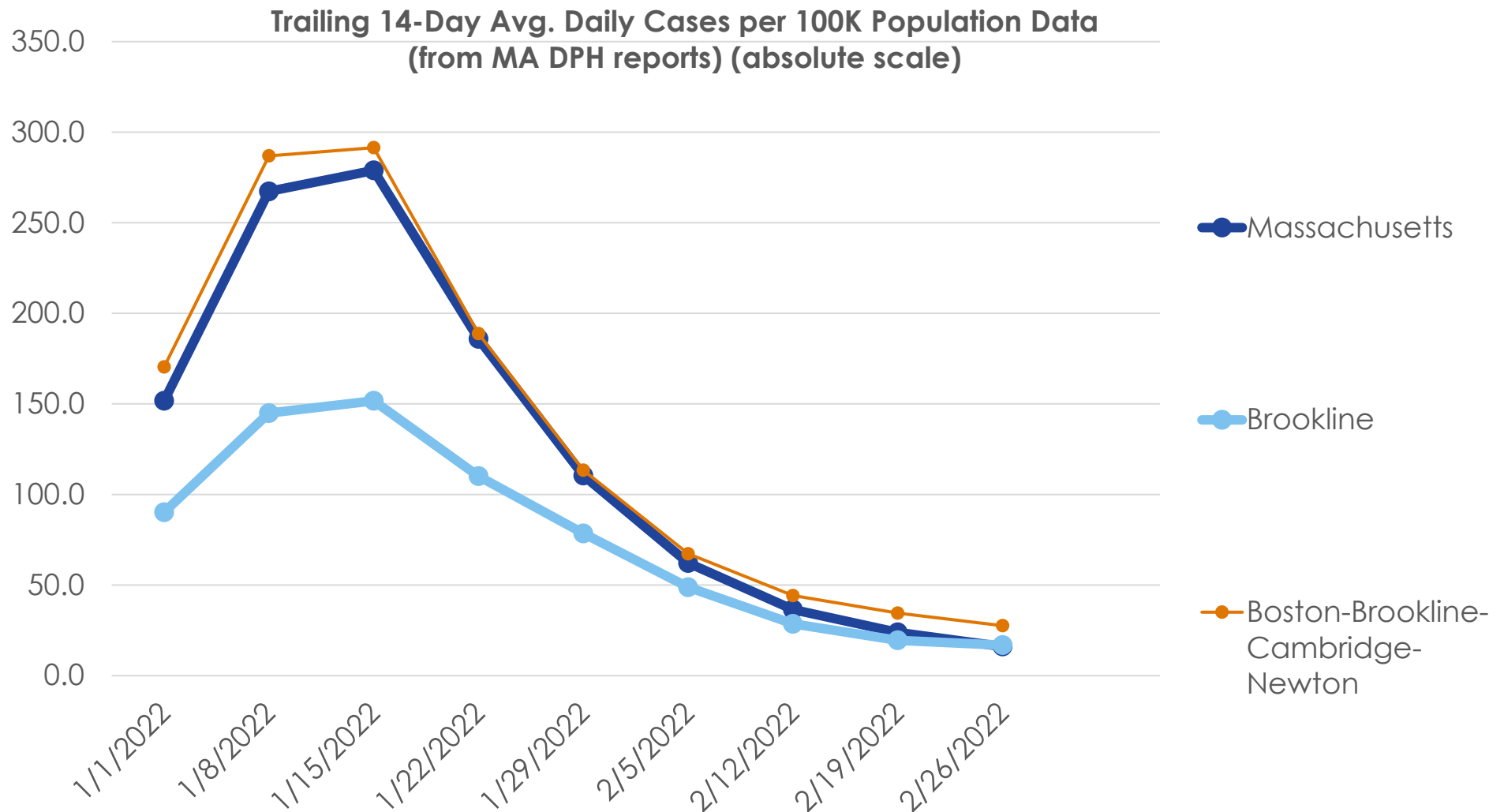
Group	Population		
	Under 10K	10K-50K	Over 50K
Grey	Less than or equal to 10 total cases	Less than or equal to 10 total cases	Less than or equal to 15 total cases
Green	Less than or equal to 15 total cases	<10 avg cases/100k AND >10 total cases	<10 avg cases/100k AND >15 total cases
Yellow	Less than or equal to 25 total cases	≥10 avg cases/100k OR ≥5% pos rate	≥10 avg cases/100k OR ≥ 4% pos rate
Red	More than 25 total cases	≥10 avg cases/100k AND ≥5% pos rate	≥10 avg cases/100k AND ≥4% pos rate

**Brookline is here as of 2/26/22 (yellow)**

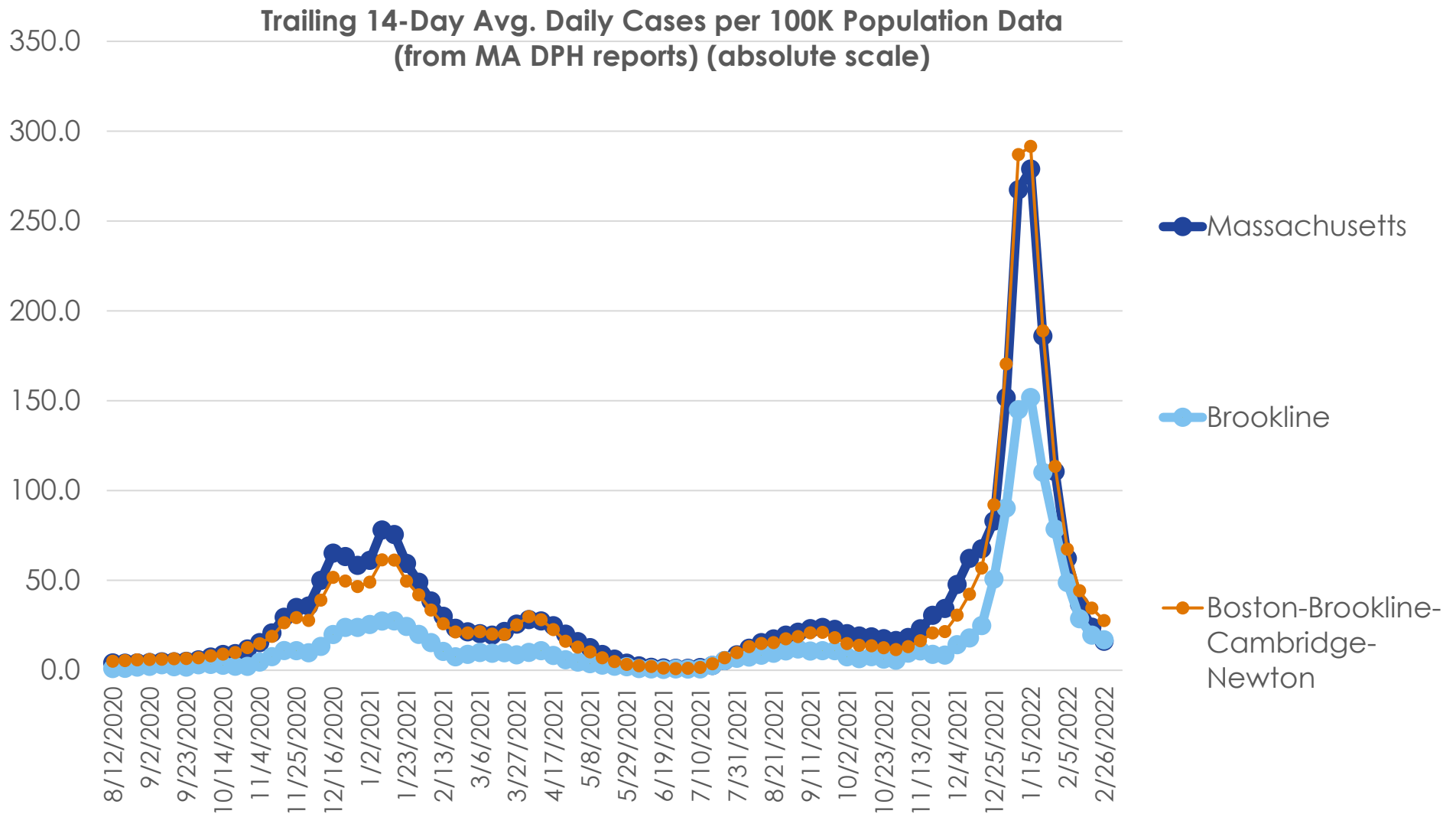
*Brookline's population is ~63,000*

As of 11/5, DPH is using 2019 population estimates derived from a method developed by the University of Massachusetts Donahue Institute. The 2019 estimates are the most currently available data.

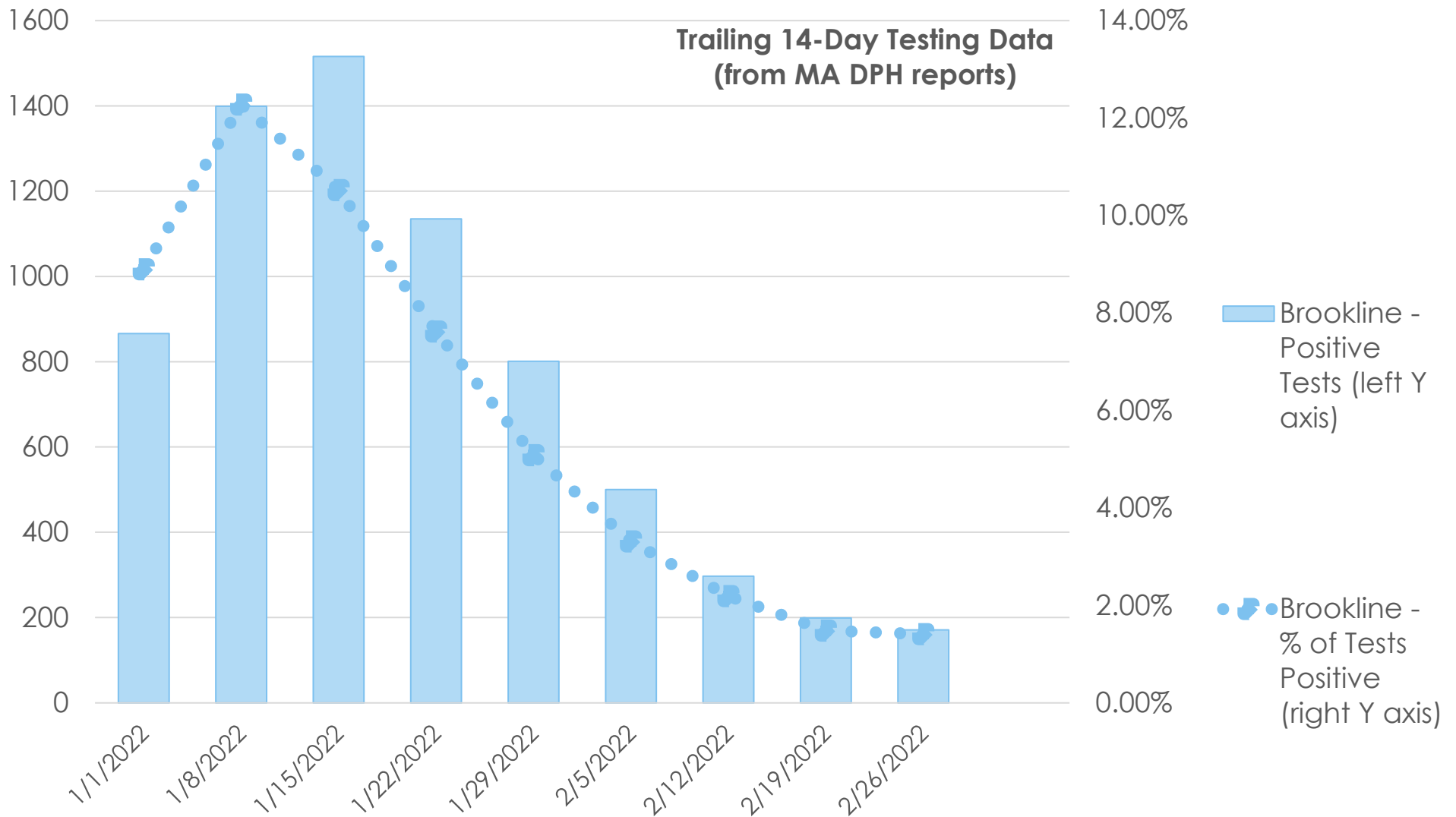
# Trends: Avg. Daily New Cases per 100k



# Trends: Avg. Daily New Cases per 100k

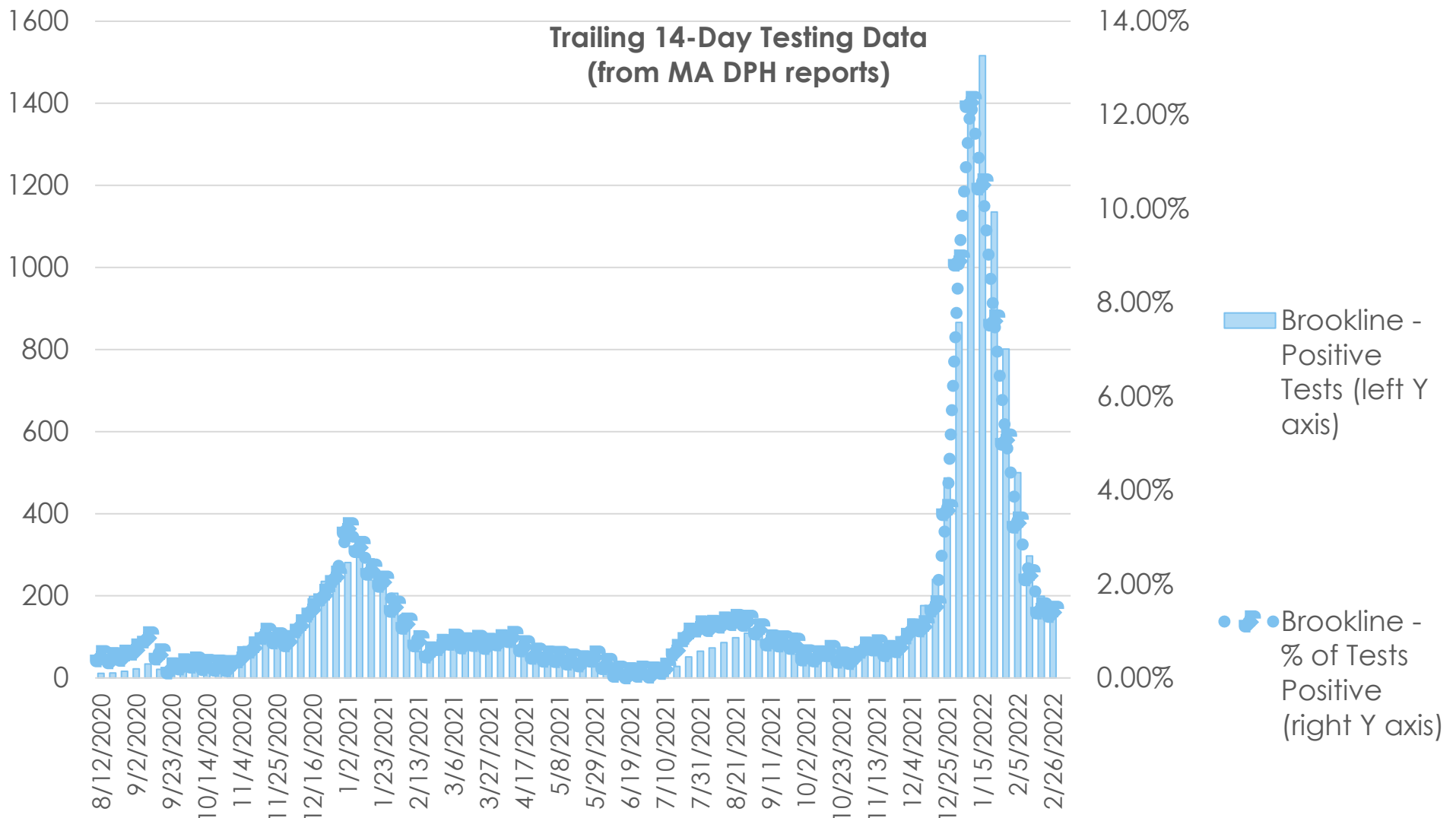


# Trends: Test Positivity (Brookline)

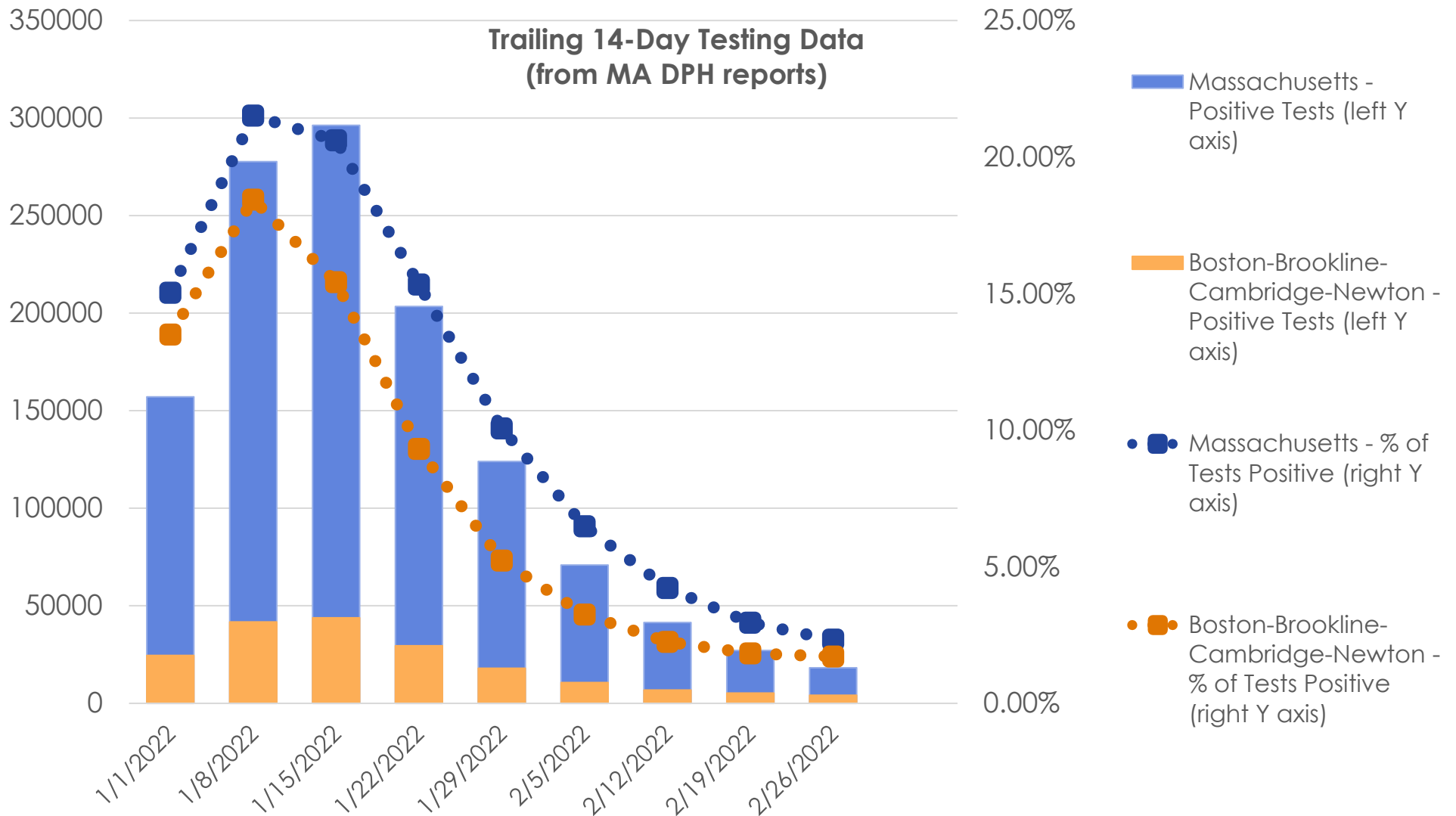


Data source: <https://www.mass.gov/info-details/covid-19-response-reporting>

# Trends: Test Positivity (Brookline)



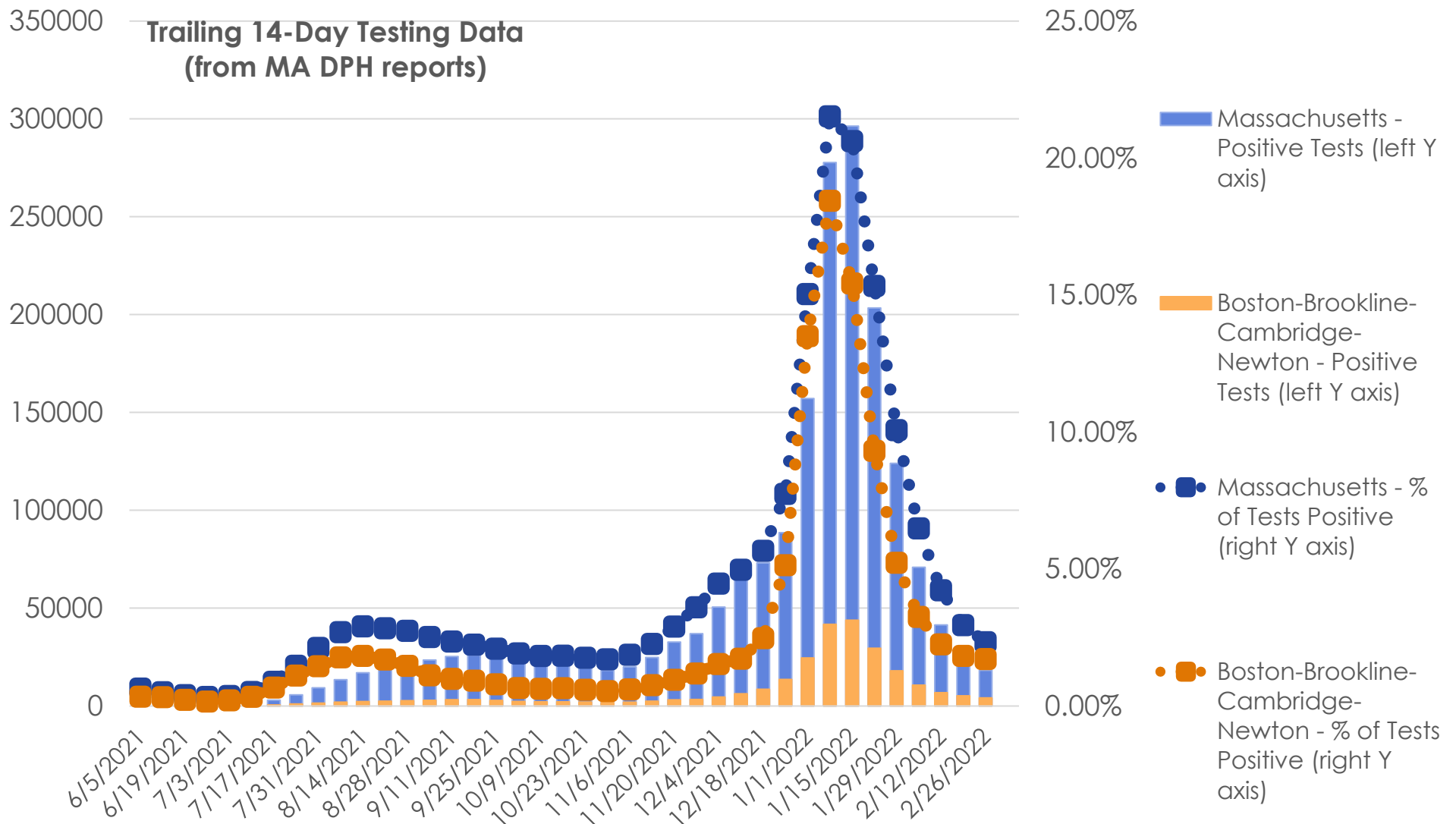
# Trends: Test Positivity (Statewide)



Data source: <https://www.mass.gov/info-details/covid-19-response-reporting>



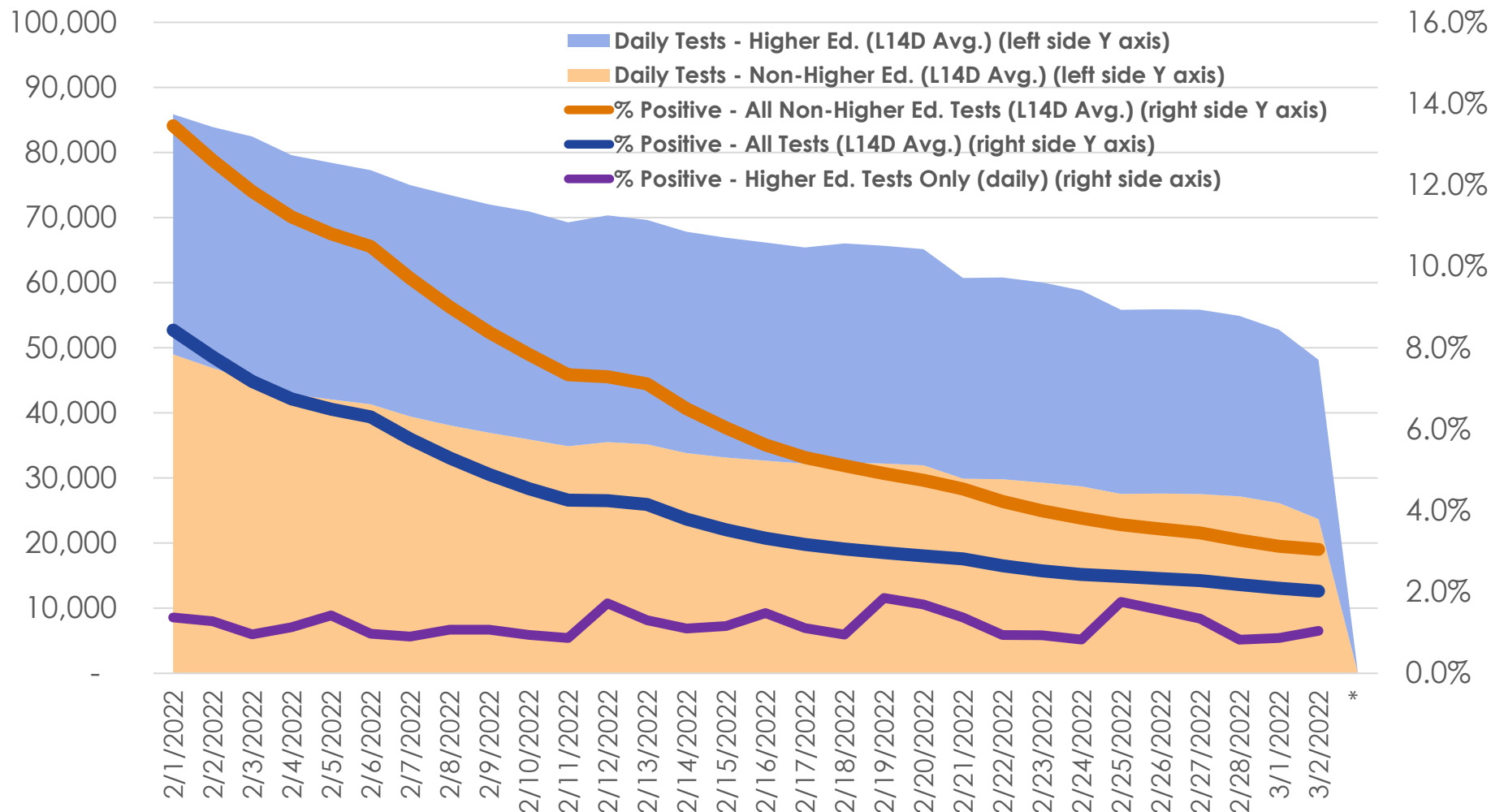
# Trends: Test Positivity (Statewide)



Data source: <https://www.mass.gov/info-details/covid-19-response-reporting>

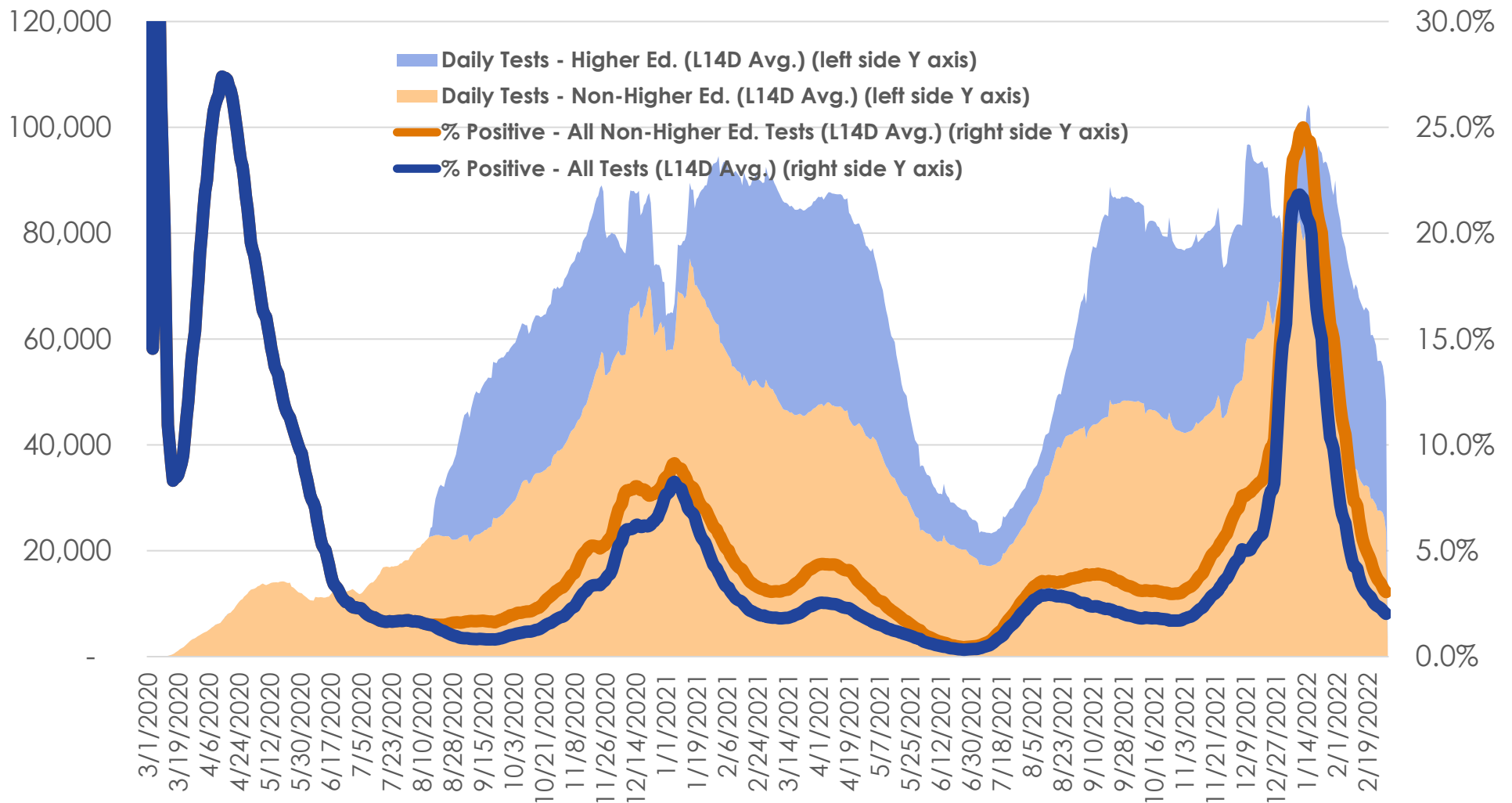
# Trends: Test Positivity and Testing Volume (Statewide)

MA Statewide Test Positivity and Volume



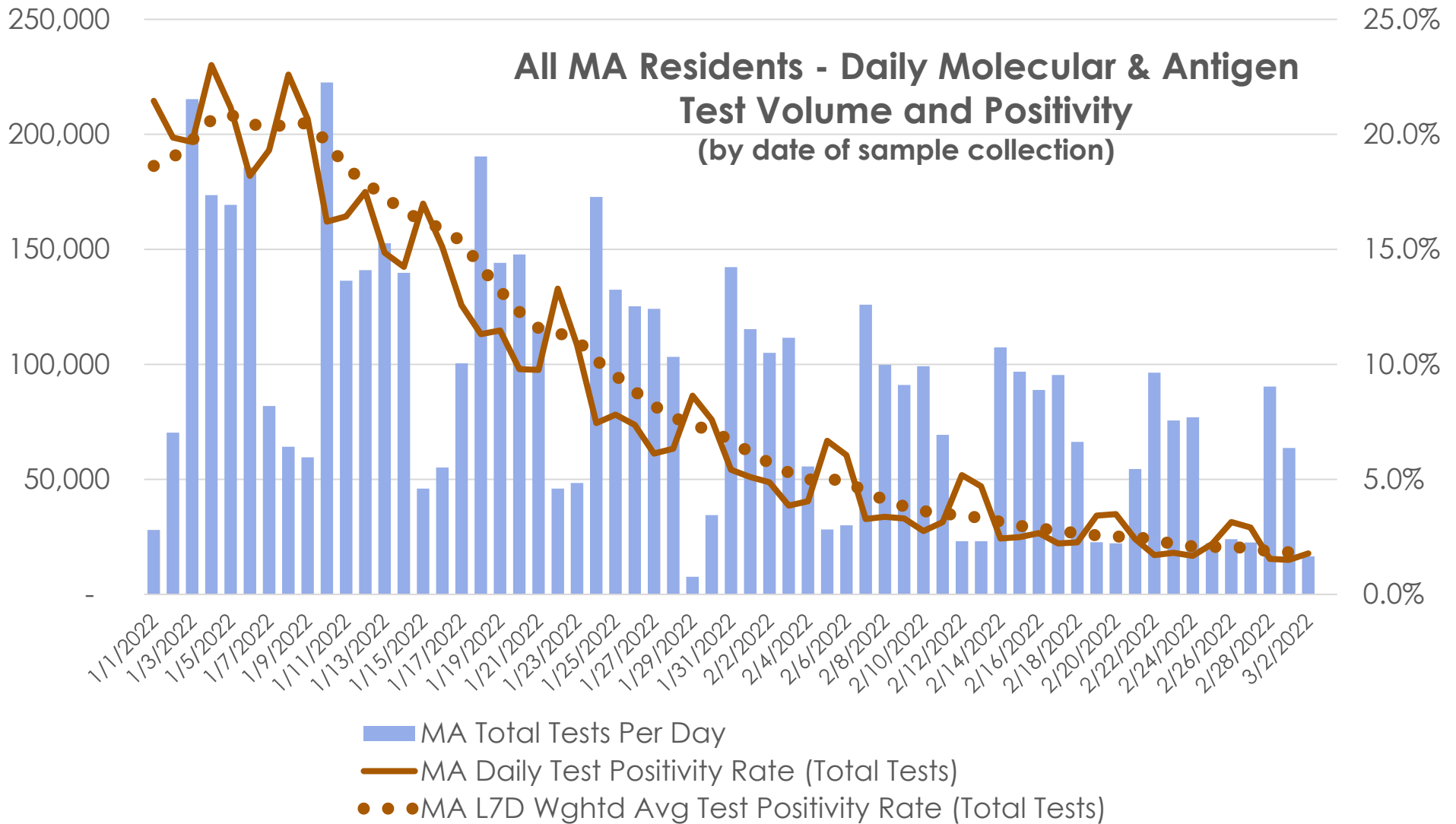
# Trends: Test Positivity and Testing Volume (Statewide)

MA Statewide Test Positivity and Volume

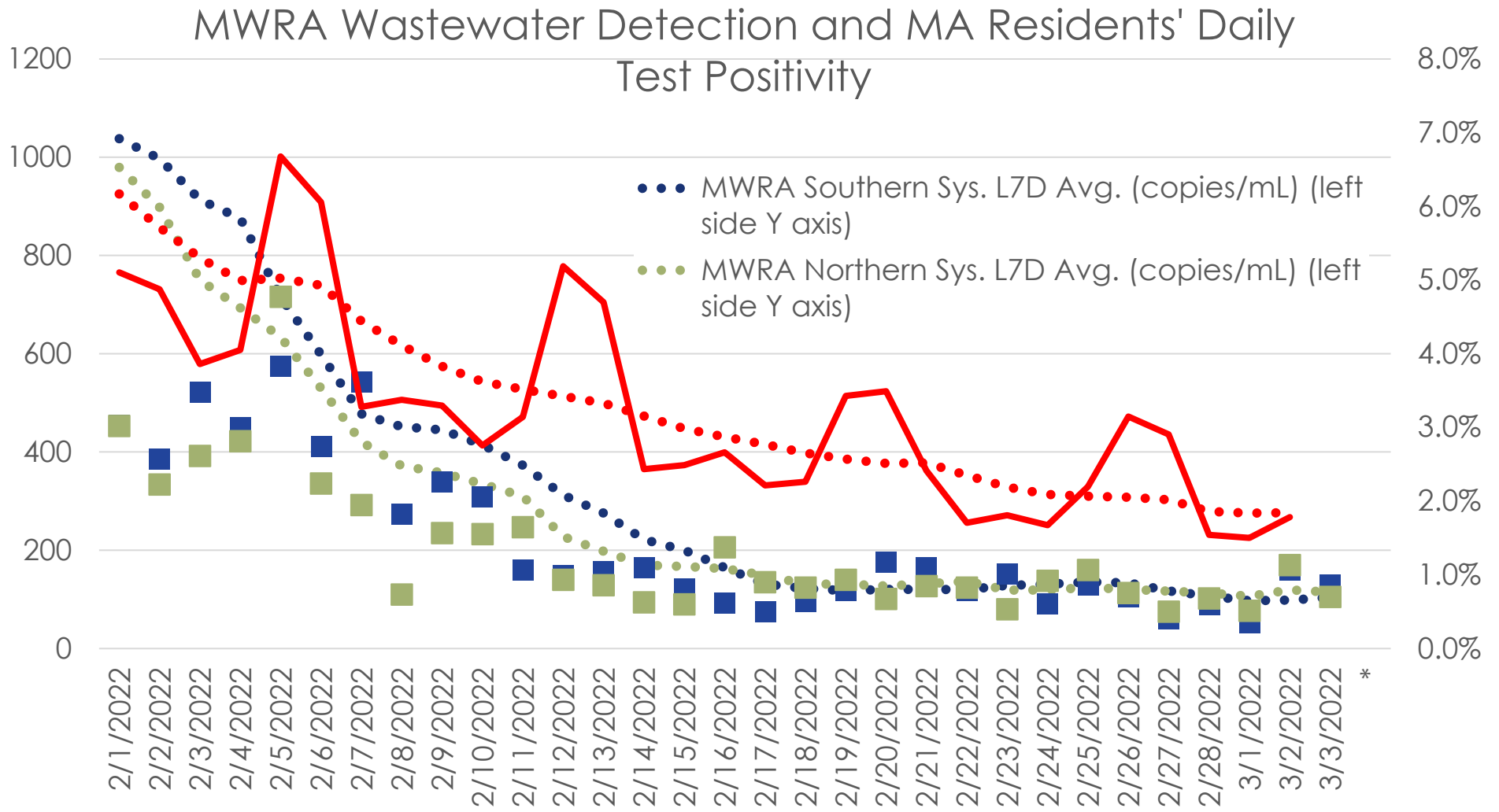


Data source: <https://www.mass.gov/info-details/covid-19-response-reporting>

# Trends: Daily Test Volumes and Positivity (Statewide)



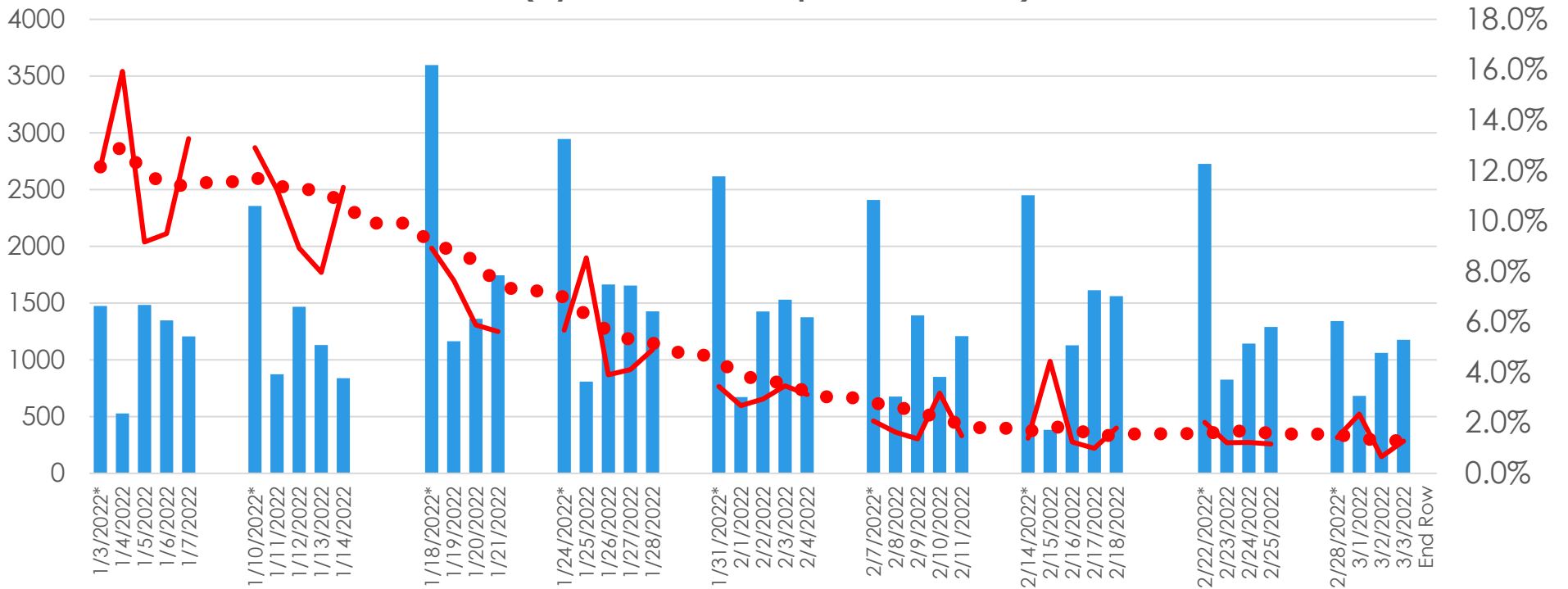
# Trends: MA Statewide Test Positivity and MWRA Wastewater Tracking



Data sources: <https://www.mass.gov/info-details/covid-19-response-reporting>;  
<https://www.mwra.com/biobot/biobotdata.htm>

# Trends: Daily Test Volumes and Positivity (Brookline Residents)

Brookline Resident Testing Volumes and Positivity  
(by Date of Test Report to MA DPH)



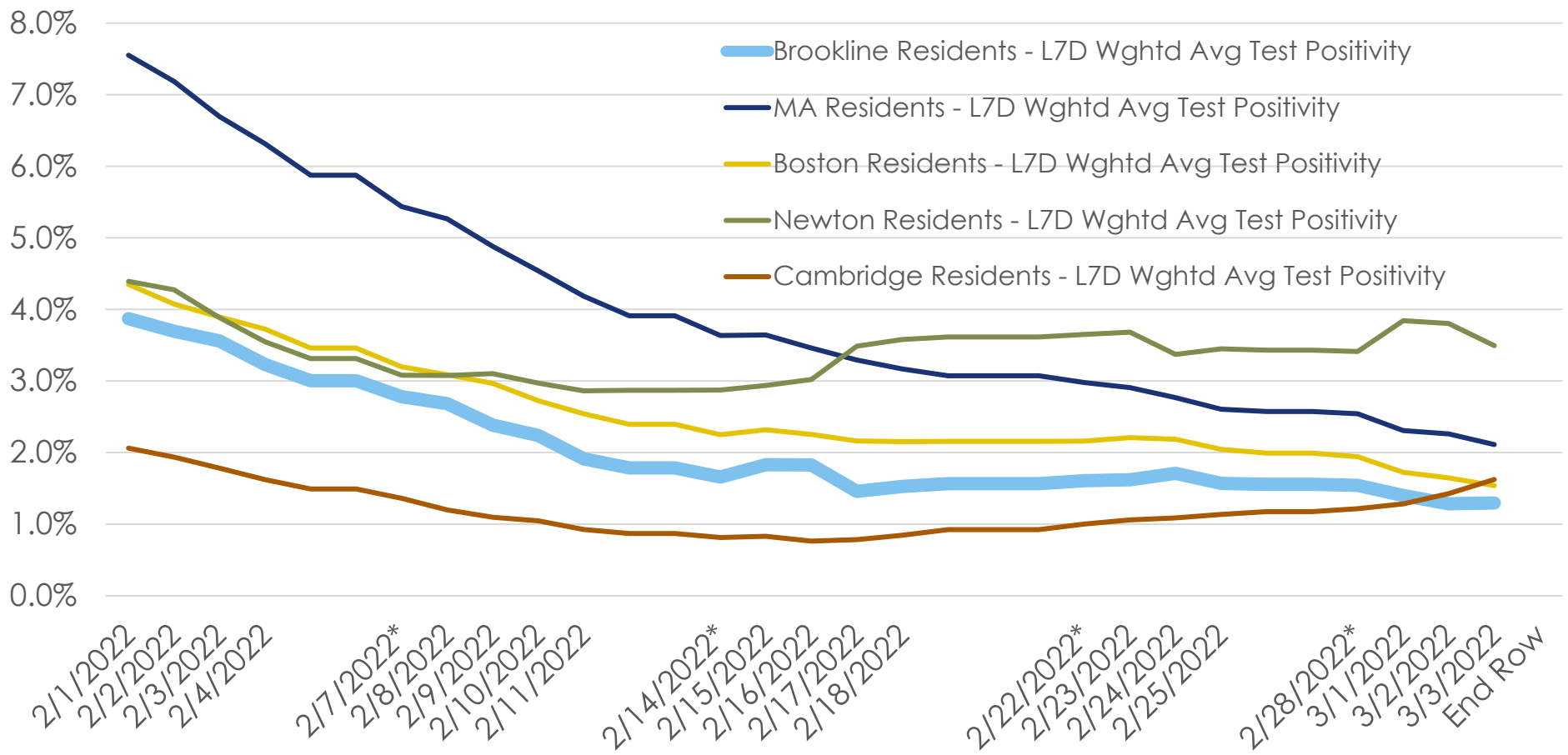
Brookline Resident Total Tests (left side Y axis)

Brookline Resident Daily Positive % (right side Y axis)

Data source: MA DPH Chapter 93 State Daily Numbers Report available at <https://www.mass.gov/info-details/covid-19-response-reporting>

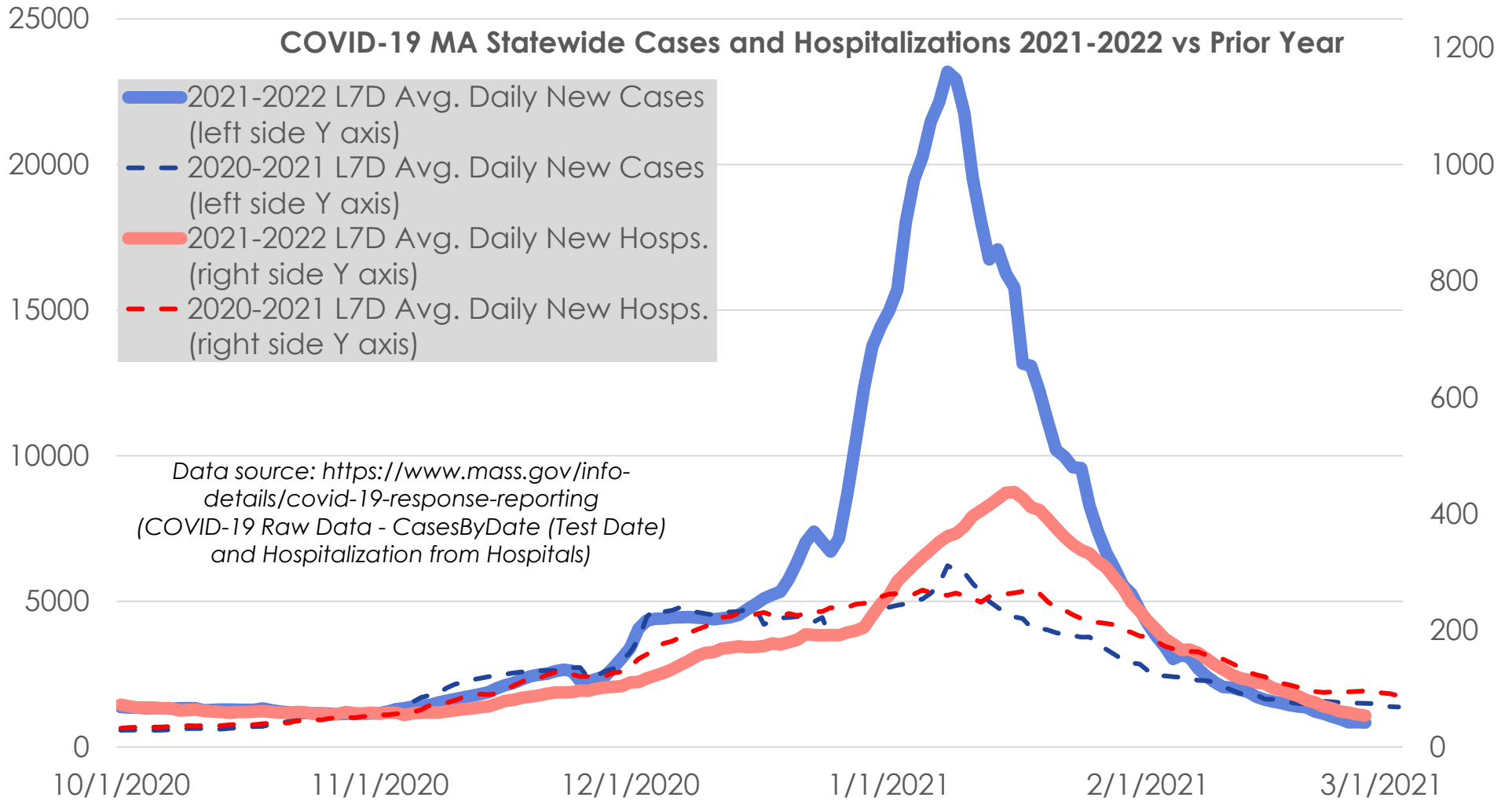
# Local Trends: Test Positivity

Weighted Average Test Positivity - Last 7 Days  
(by date of result report to MA DPH)



# Trends: Daily New Cases and Hospitalizations (Statewide)

**Important Caveat**  
 Hosp. data includes individuals hospitalized for **non-COVID** reasons but test COVID+

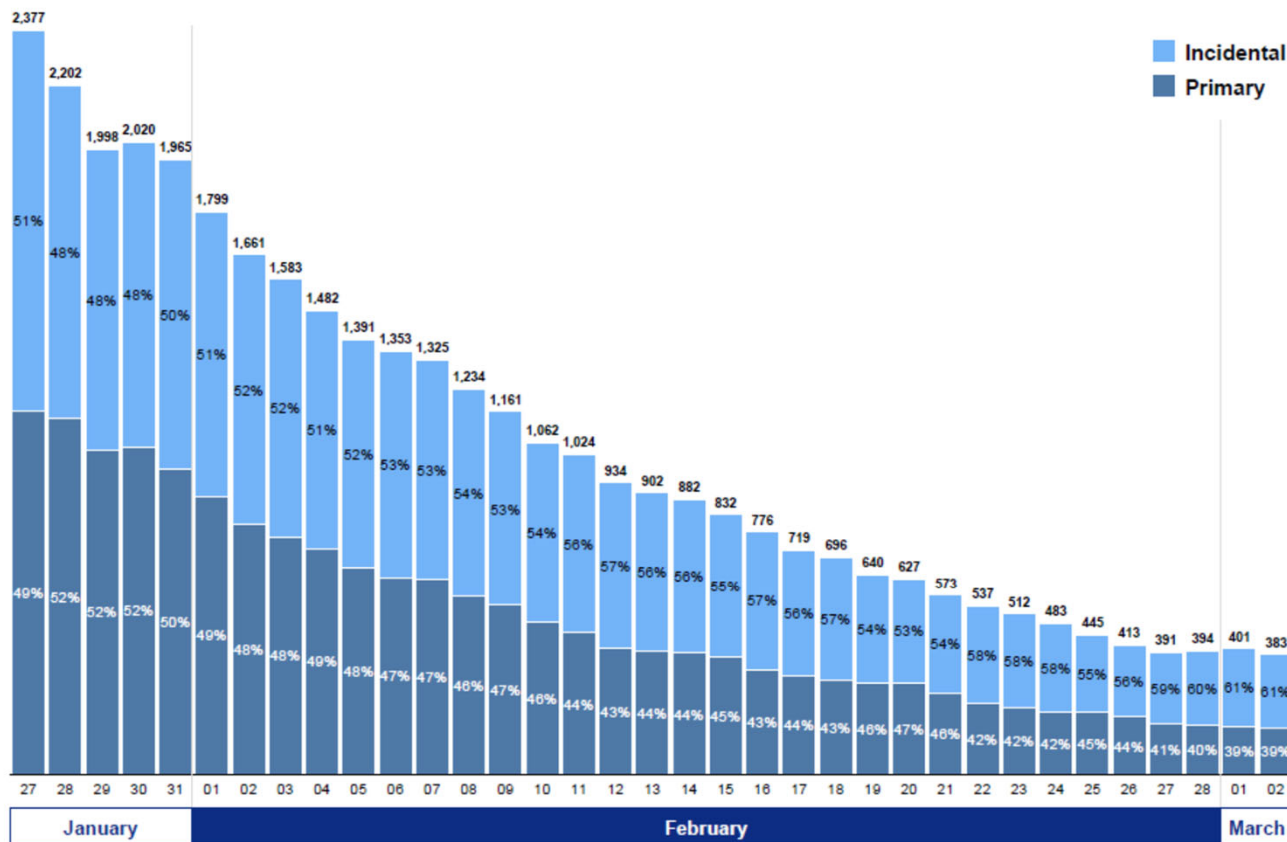




# Trends: Hospitalizations (Statewide)

## COVID-19 Hospitalizations

Statewide COVID-19 Hospitalizations

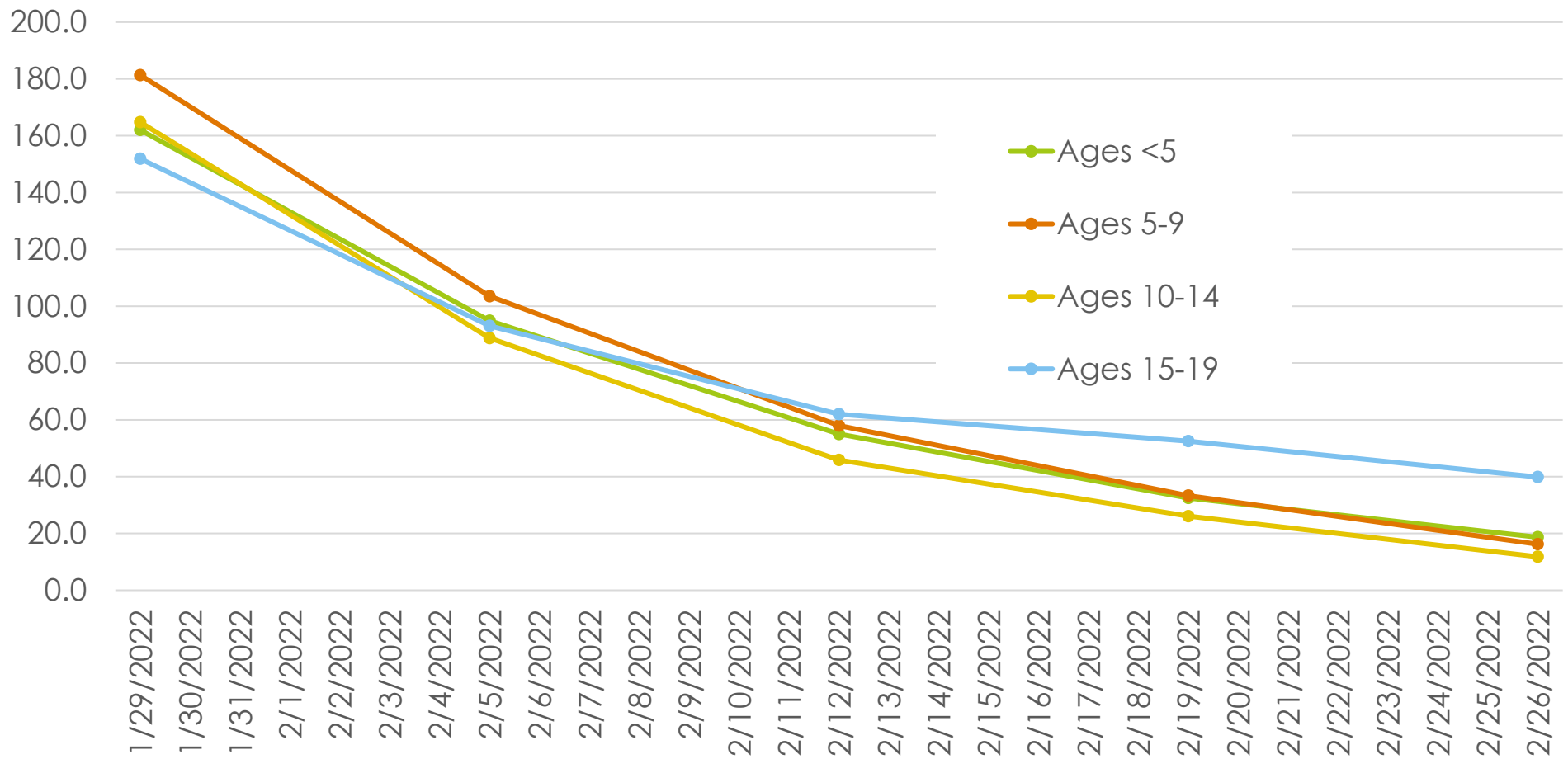


Of the **383** hospitalized COVID-19 patients statewide, **149 (39%)** patients were reported as being hospitalized due to their COVID-19 (primary COVID-19) and **234 (61%)** hospitalized patients were reported as testing positive for COVID-19 while hospitalized for other reasons (incidental COVID-19)<sup>1</sup>

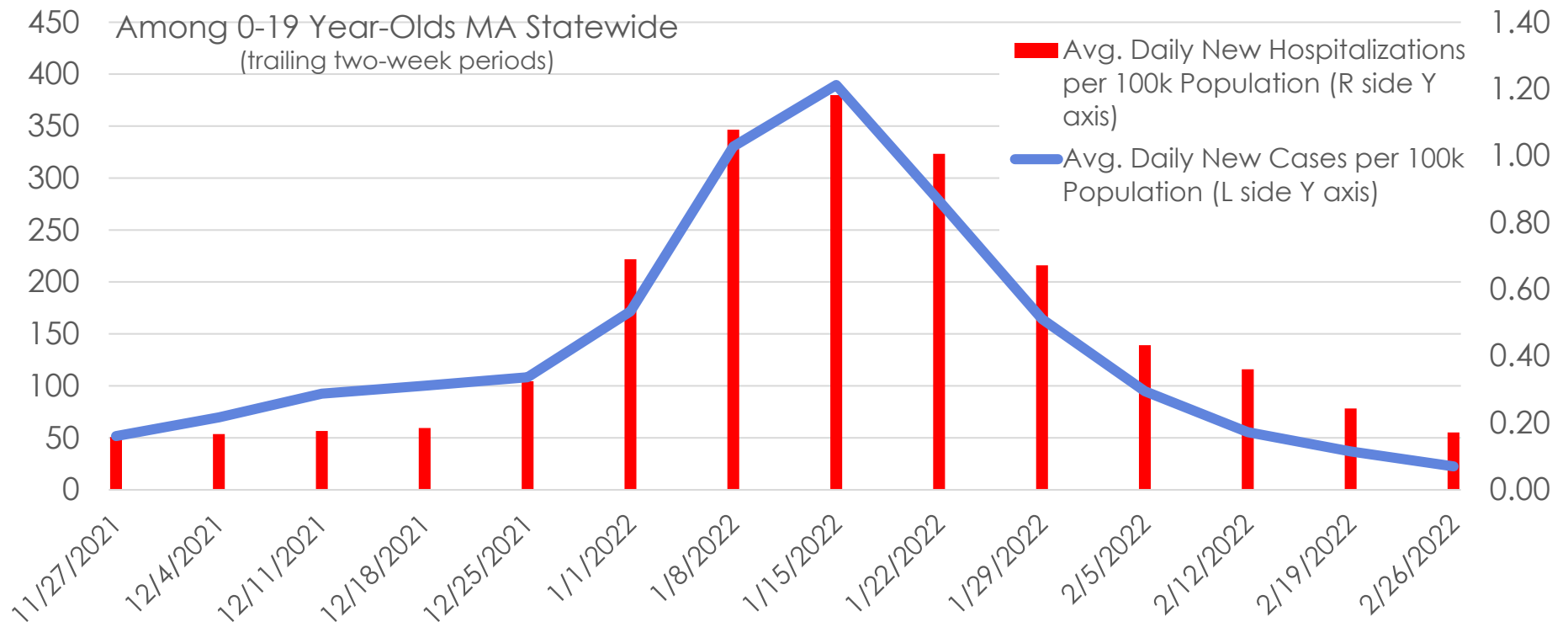
1. Patients are reported as being hospitalized due to their COVID-19 if they received dexamethasone treatment. Administration of dexamethasone, a type of steroid medication, is considered an indicator of moderate to severe COVID-19 and provides an estimate of primary COVID-19.

# Trends: 0-19 Year-Old Age Cohort (MA Statewide)

Avg. Daily Cases Per 100k Pop. in Age Range  
(Trailing 2 Weeks)



# Trends: 0-19 Year-Old Age Cohort COVID-Associated Hospitalizations



<b><i>Nationwide</i> estimates from AAP/CHA</b>	<b>Pediatric Case Hosp. Rate</b>	<b>Pediatric Case Fatality Rate</b>
Most Recent	0.7%	0.01%
Last 12 Mos.	0.7% - 0.9%	0.01%

**Important Caveat**  
Hosp. data includes individuals hospitalized for **non-COVID** reasons but test COVID+

Data source: <https://www.mass.gov/info-details/covid-19-response-reporting>; <https://www.aap.org/en/pages/2019-novel-coronavirus-covid-19-infections/children-and-covid-19-state-level-data-report/>

## PSB Case Data

- <https://datastudio.google.com/u/0/reporting/e3326bdd-16ea-4ed3-b3c2-8b11e8da9969/page/nQ3oB>

## Where Do We Stand Right Now?

- Most recent snapshot average daily new case rates per 100k people:
  - MA residents = ~15
  - Brookline residents = ~10
- Most recent snapshot average daily test positivity:
  - MA residents overall = ~2.0%
  - MA higher education tests only = ~1.0%
  - Brookline residents overall = ~1.0%
- **Rough** estimate of # of currently infected and contagious PSB students and staff = 50 – 60 people

## PSB Student Vaccination Rates

<i>(data as of early February)</i>	<b>Fully Vaccinated</b>	<b>Partially Vaccinated</b>
<b>BEEP (of age-eligible)</b>	59.1%	15.2%
<b>Grades K-5</b>	76.0%	6.2%
<b>Grades 6-8</b>	85.1%	3.5%
<b>Grades 9-12</b>	90.9%	2.2%

*All PSB staff members are required by policy (and CBAs where applicable) to be fully vaccinated unless they obtain an individual medical/disability/religious exemption.*

# Guidance Updates

- US CDC
  - <https://www.cdc.gov/coronavirus/2019-ncov/science/community-levels-county-map.html>
  - [https://www.cdc.gov/coronavirus/2019-ncov/science/community-levels.html#anchor\\_82254](https://www.cdc.gov/coronavirus/2019-ncov/science/community-levels.html#anchor_82254)
  - <https://www.cdc.gov/coronavirus/2019-ncov/your-health/quarantine-isolation.html>
- Infectious Diseases Society of America
  - <https://www.idsociety.org/news--publications-new/articles/2022/idsa-support-for-cdcs-change-to-covid-19-guidance/>
- American Academy of Pediatrics
  - <https://www.aap.org/en/news-room/news-releases/aap/2022/american-academy-of-pediatrics-offers-new-masking-recommendations-for-families-following-updated-cdc-guidance/>

# Guidance Updates, ctd.

- MA Dep't of Health
  - <https://www.mass.gov/info-details/covid-19-mask-requirements>
  - <https://www.mass.gov/doc/advisory-regarding-face-coverings-updated-3122-0/download>
  - [https://www.mass.gov/info-details/covid-19-isolation-and-quarantine-guidance-for-the-general-public#if-you-were-exposed-to-someone-with-covid-19-\(quarantine\)-](https://www.mass.gov/info-details/covid-19-isolation-and-quarantine-guidance-for-the-general-public#if-you-were-exposed-to-someone-with-covid-19-(quarantine)-)
- MA Dep't of Elementary and Secondary Education
  - <https://www.doe.mass.edu/covid19/on-desktop/2022-0209mask-requirement-update.pdf>
  - <https://www.doe.mass.edu/covid19/on-desktop/protocols/protocols.pdf>
- Newton Public Schools Medical Advisory Group
  - <https://docs.google.com/document/d/1O07YDM7pBzSFVuf-9KUBTd6b0jsOZXfLMb4s-isMx34/edit>



## Panel 4 Recommendations (1 of 2)

- There is no ongoing need for silent lunch for pandemic mitigation
- Anyone eligible but not fully vaccinated should get fully vaccinated (including booster when eligible)
- Students/staff should have masks with them at school every day in case need arises to wear
- PSB should move to mask-optional policy for grades K-12
  - No risk-based need to wait, but please consider implementation details and a runway to allow families/students/staff to plan and adjust
  - Going forward, very important to support mask-friendly buildings, including emotional support and provision of easy and free access to high-filtration masks for all who want them
  - See next page for situation-specific recommendations

Sources:

## Panel 4 Recommendations (2 of 2)

The following people are strongly recommended to continue to wear masks indoors (and PSB should consider still requiring in cases indicated by \*):

1. Those with symptoms consistent with respiratory illness\*
2. Those with household close contacts who recently tested COVID+\*
3. Those recommended/required to wear masks under CDC/DPH/DESE isolation/quarantine protocols, especially those returning from isolation\*
4. Those who are not fully vaccinated, including those not currently eligible for COVID-19 vaccine (e.g., ages 2-5)
5. Those who are immunocompromised and may not have a protective immune response to the COVID-19 vaccine, or who are otherwise at high risk for severe COVID-19 illness if infected
6. Those with household members in categories 4. and/or 5.
7. All PSB students/staff while on indoor field trips
8. All audience members at large concerts/assemblies and all spectators at sporting events—especially if gym/auditorium capacity limits for enhanced ventilation cannot be observed\*

Sources: